



# About Science Prof Online PowerPoint Resources

- Science Prof Online (SPO) is a free science education website that provides fully-developed Virtual Science Classrooms, science-related PowerPoints, articles and images. The site is designed to be a helpful resource for students, educators, and anyone interested in learning about science.
- The SPO Virtual Classrooms offer many educational resources, including practice test questions, review questions, lecture PowerPoints, video tutorials, sample assignments and course syllabi. New materials are continually being developed, so check back frequently, or follow us on Facebook (Science Prof Online) or Twitter (ScienceProfSPO) for updates.
- Many SPO PowerPoints are available in a variety of formats, such as fully editable PowerPoint files, as well as uneditable versions in smaller file sizes, such as PowerPoint Shows and Portable Document Format (.pdf), for ease of printing.
- Images used on this resource, and on the SPO website are, wherever possible, credited and linked to their source. Any words underlined and appearing in blue are links that can be clicked on for more information. PowerPoints must be viewed in *slide show mode* to use the hyperlinks directly.
- Several helpful links to fun and interactive learning tools are included throughout the PPT and on the Smart Links slide, near the end of each presentation. You must be in *slide show mode* to utilize hyperlinks and animations.
- This digital resource is licensed under Creative Commons Attribution-ShareAlike 3.0:  
<http://creativecommons.org/licenses/by-sa/3.0/>

Alicia Cepaitis, MS  
Chief Creative Nerd  
Science Prof Online  
Online Education Resources, LLC  
[alicia@scienceprofonline.com](mailto:alicia@scienceprofonline.com)

Tami Port, MS  
Creator of Science Prof Online  
Chief Executive Nerd  
Science Prof Online  
Online Education Resources, LLC  
[info@scienceprofonline.com](mailto:info@scienceprofonline.com)

# Tasmanian Devils

**VIDEO:**  
Tasmanian Devil  
"[What's Up Doc?](#)"  
Loony Toons clip.



# Tasmanian Devils



# Tasmanian Devils are REAL!

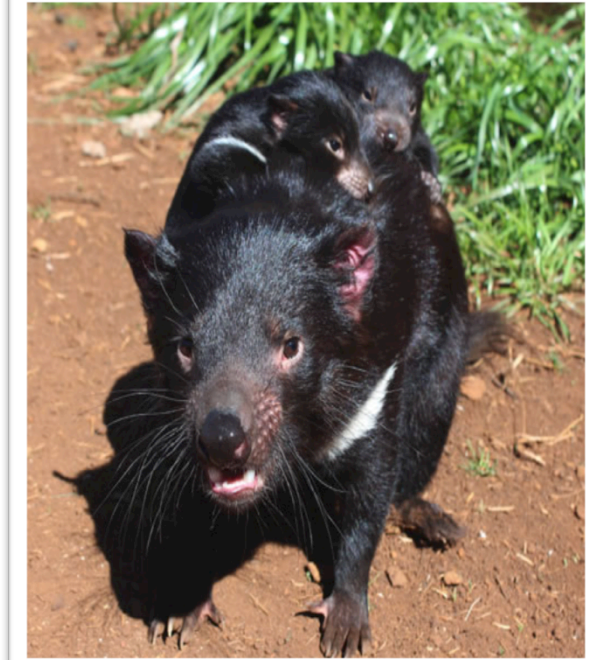
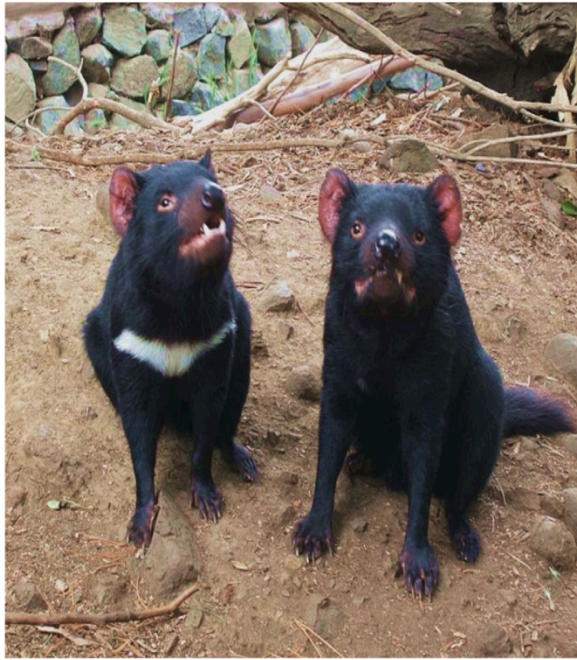


# Tasmanian Devils are FIERCE!



**VIDEO:**  
Tasmanian  
Devils  
Battle  
from  
Animal  
Planet

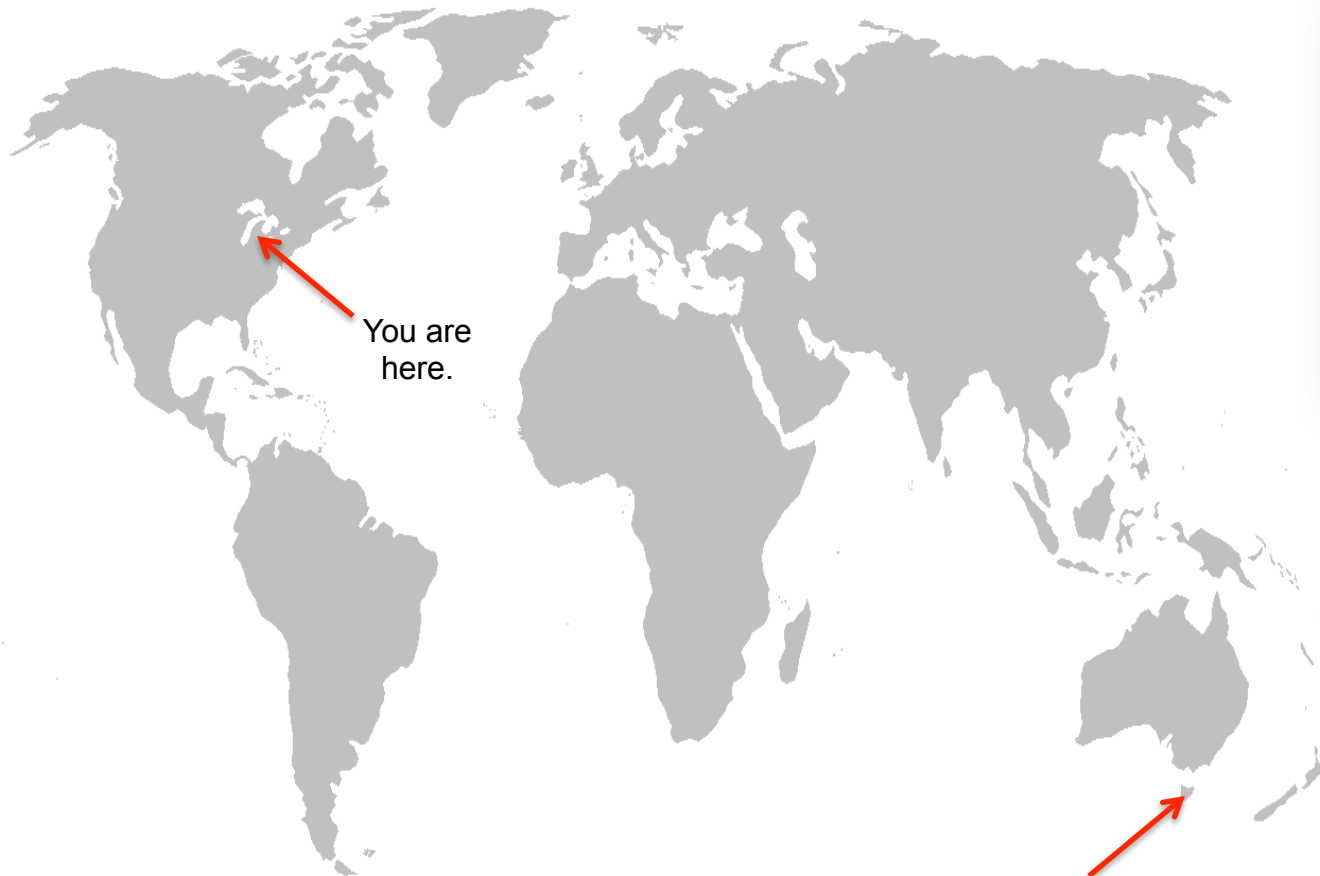
# More About Tasmanian Devils



- Mammals
- Marsupials
- Carnivore  
(hunter & scavenger)
- Size of a small dog
  - Muscular
- Strongest bite per body mass
  - Loud
  - Ferocious
  - Stinky (when stressed)
- Excellent sense of smell
  - Often feed in groups
- Dominance (most aggressive > least aggressive)
  - Fight for food and mates

*Baby  
Tasmanian  
devils are  
called "imps",  
"pups or  
"joeys"."*

# Where the heck is Tasmania?



- Island state of Australia.
- 26<sup>th</sup> largest island in world
- Climate similar, but not as cold, as ours.
  - Four seasons.
  - Summer lasts from December to February.
- 35,042 square miles.
- Population 515,000.
- Michigan LP is 56,809 square miles.
- Michigan LP population almost 10 million.
- It would take more than 24 hours to take an airplane there!

Tasmania  
are here.

You are  
here.

# Lets watch more videos of Tasmanian Devils!



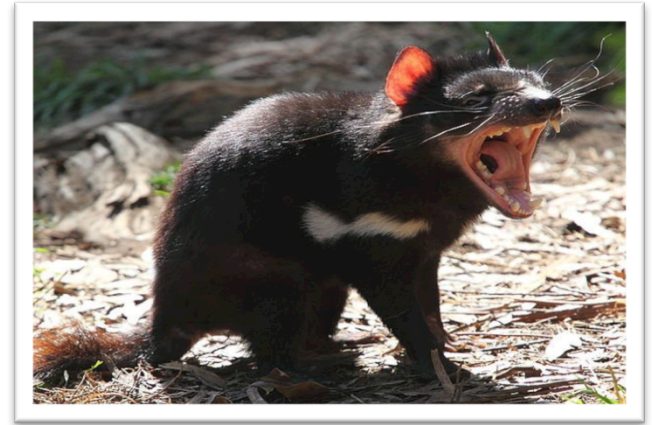
[Tasmanian Devil](#), from Science Channel

[Taz Devil Talking to Me](#) (followed by Angry Devil), from  
Snake Artist

[Baby Tasmanian Devils in Kitchen](#), from Snake Artist



# Why Would An Animal this Fierce Need Our Help?



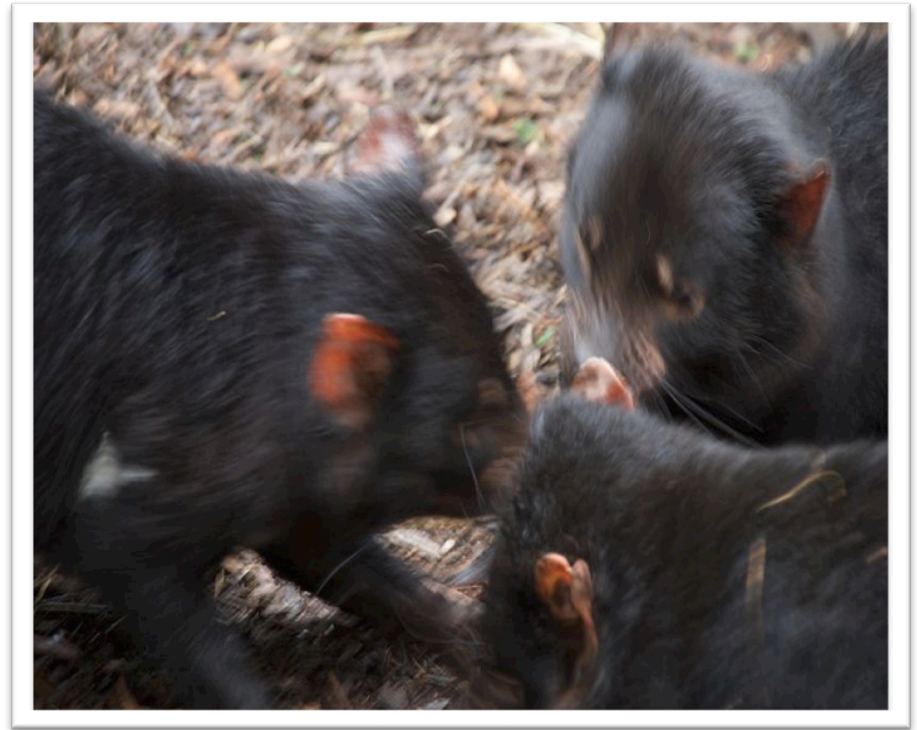
Tasmanian  
Devil  
Facial  
Tumor  
Disease

# Devil Facial Tumor Disease (DFTD)



- DFTD is an aggressive (fast growing), parasitic cancer found only in Tasmanian Devils.
- DFTD is very unusual, one of only four known cancers that can spread like a contagious disease (disease you can catch).

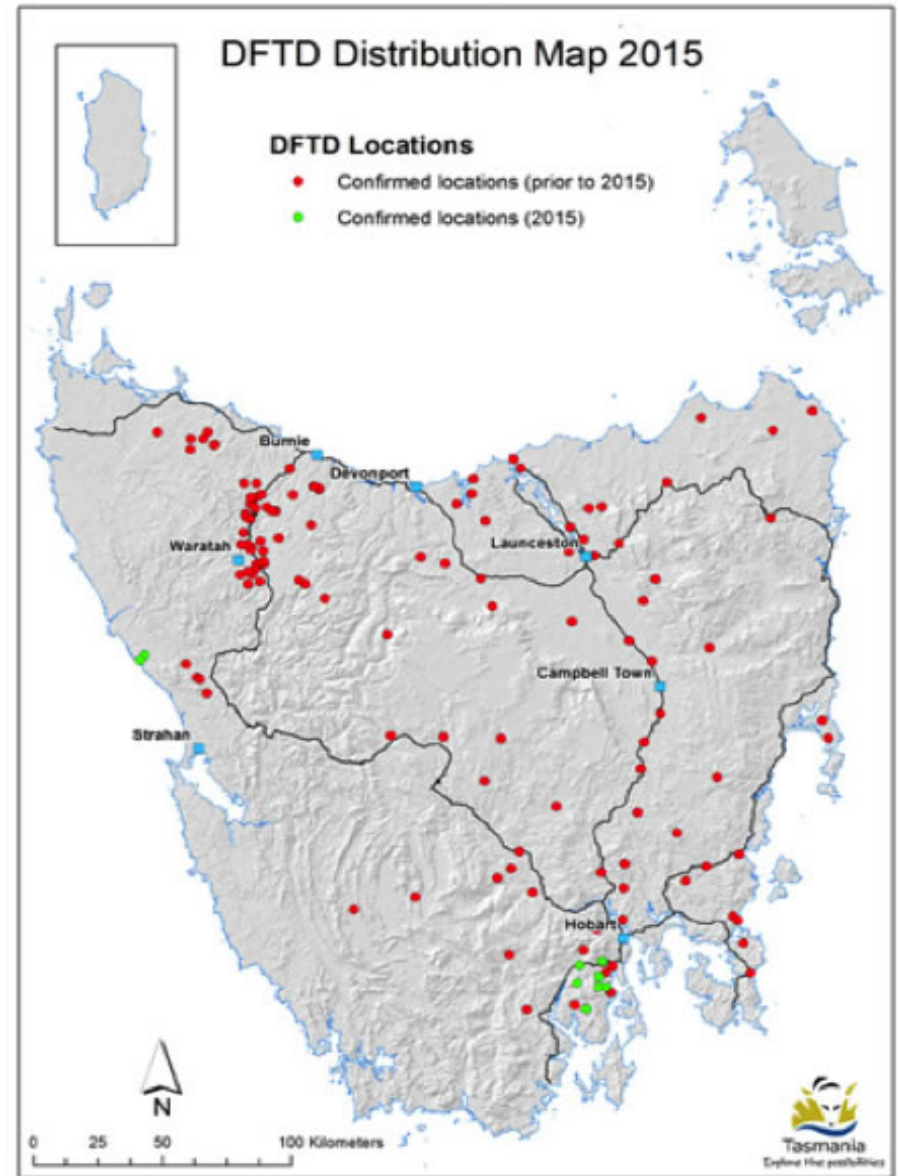
# Devil Facial Tumor Disease (DFTD)



- The cancer is passed from devil to devil through biting.
- Devils bite each other in the face a lot, when feeding and fighting with their mates.
- The tumor is crumbly, and pieces break off easily. When tumor pieces fall into bite wounds, new tumors form and grow.
- Tumors usually first appear in and around the mouth, and look like small sores or lumps. Then develop into large tumors around the face and neck.

# Devil Facial Tumor Disease (DFTD)

- Since the late 1990s, Devil Facial Tumor Disease has reduced the Tasmanian Devil population so much that these animals might go *extinct*.
- In 2008, the Tasmanian Devil was declared an ***endangered species***.



Images: from the [Devil Ark website](#). Donate and help save the Tasmanian Devil!

# Devil Facial Tumor Disease (DFTD)



- The tumors make it hard for devils to find and eat food.
- Once the tumor is big enough to be seen, it is always fatal.



**But we can help!**

**Here's how...**

Images: [Tasmanian Devil with facial tumors](#), Wiki;  
[Devil Ark](#) photo of girl holding Tasmanian devil



DONATE

ADOPT

SHOP

[Home](#)

[About](#) ▾

[The Tasmanian Devil](#) ▾

[How You Can Help](#) ▾

[Media](#) ▾

[Contact](#)



# Get To Know Me

I PROMISE I WON'T BITE

Adopt a Tasmanian Devil  
through Australia's  
[Devil Ark](#) conservation program!

# Luv Tasmanian Devils!

